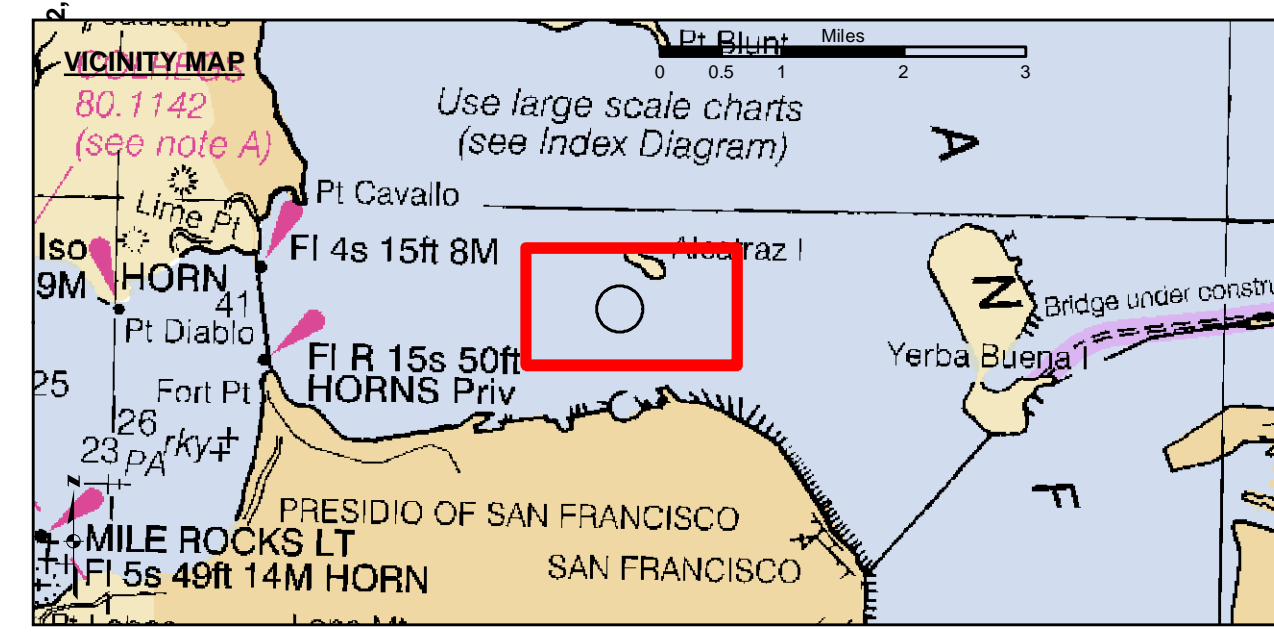
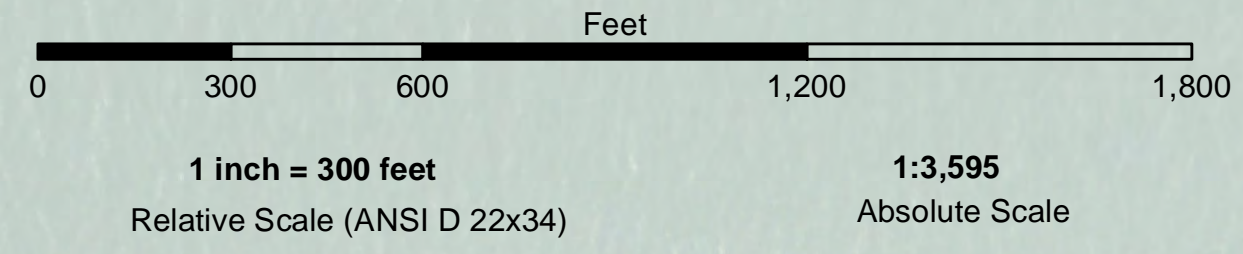


LAMBERT COORDINATES			
POINT	X	Y	
U.S.G.S. MON: 57	ELEV. - 14.00	6,005,367	2,123,290
TRANSAMERICA BUILDING		6,011,912	2,117,586
ALCATRAZ DISPOSAL SITE - (SF-11)			
1,000 FT. RADIUS		6,005,935	2,127,235
ALCATRAZ LIGHT		6,008,552	2,129,010
ALCATRAZ BUOY		6,008,367	2,127,186



- Federal Navigation Channel
- Shoaling Area
- Placement Area
- Anchorage Area
- Wreck Area
- Submerged Wreck
- Zone III Angle Points
- Beacon, General
- Obstruction Point
- Navigation Buoy
- Navigation Buoy
- Shoalest Sounding\*
- Contour Lines
- Every 10'
- 20' to -120'

NOTES:  
 HORIZONTAL COORDINATE SYSTEM:  
 NORTH AMERICAN DATUM OF 1983 (NAD83). PROJECTED TO THE STATE PLANE COORDINATE SYSTEM (SPCS), CALIFORNIA ZONE III. DISTANCE UNITS IN U.S. SURVEY FEET.  
 VERTICAL DATUM:  
 SOUNDINGS ARE SHOWN IN FEET AND INDICATE DEPTHS BELOW MEAN LOWER LOW WATER.  
 THE INFORMATION DEPICTED ON THIS MAP REPRESENTS THE RESULTS OF A SURVEY CONDUCTED ON THE DATE INDICATED AND CAN ONLY BE CONSIDERED TO REPRESENT THE GENERAL CONDITION EXISTING AT THAT TIME.  
 BASE MAPS ARE USDA NAIP 2010.  
 \*SHOALEST SOUNDING PER QUARTER PER REACH

DRAWING NOT TO BE USED FOR NAVIGATION. ONLY CHANNEL CONDITION AT DATE OF SURVEY.  
 THE LOCATION OF ALL NAVIGATION AIDS ARE BASED ON INFORMATION PROVIDED BY THE U.S. COAST GUARD. BUOY LOCATIONS REPRESENT THE POSITION OF THE SINKER ONLY.  
 SOUNDINGS WERE TAKEN BY FATHOMETER AND ARE SHOWN TO THE NEAREST TENTH OF A FOOT. SOUNDINGS ARE BASED ON THE DATUM OF MEAN LOWER LOW WATER AT THE LOCALITY.  
 SURVEYED BY THE CORPS OF ENGINEERS.  
 THE PROJECT DEPTH IS -40 FEET AT MLLW.  
 PLANE GRID AND COORDINATES ARE BASED ON LAMBERT PROJECTION, NAD 83. ZONE III CALIFORNIA AS DESCRIBED IN SPECIAL PUBLICATION NO. 235, PUBLISHED BY THE NATIONAL OCEAN SURVEY.  
 HORIZONTAL GPS CONTROL:  
 COAST GUARD D-BEACON  
 VERTICAL CONTROL:  
 BENCHMARK: 180 1936  
 PID: HT0702  
 MLLW = 3.972m(13.03ft)  
 NOAA STATION 9414290  
 TIDE GAUGE LOCATION: SAN FRANCISCO



DISCLAIMER: The United States Government furnishes this information as it is received from the person or persons who supplied it. The United States Government makes no warranty, expressed or implied, concerning the accuracy, completeness, or timeliness of the information. The user is responsible for the results of any use of the information, and the user is responsible for the results of any use of the information, and the user is responsible for the results of any use of the information. The user is responsible for the results of any use of the information, and the user is responsible for the results of any use of the information.

Prepared Under the Direction of:	Chart Date:
KEVIN P. ARNETT	Jul 25, 2022
Surveyed By:	Designed by:
PDT	PDT
Plotted by:	Checked by:
PDT	PDT
Flashed by:	Drawn by:
PDT	PDT

CALIFORNIA

SAN PABLO BAY

ALCATRAZ DISPOSAL SITE-SF11

CONDITION SURVEY

19 JULY 2022

Sheet Reference Number 1 of 1